

# NOISE ABATEMENT PROCEDURES

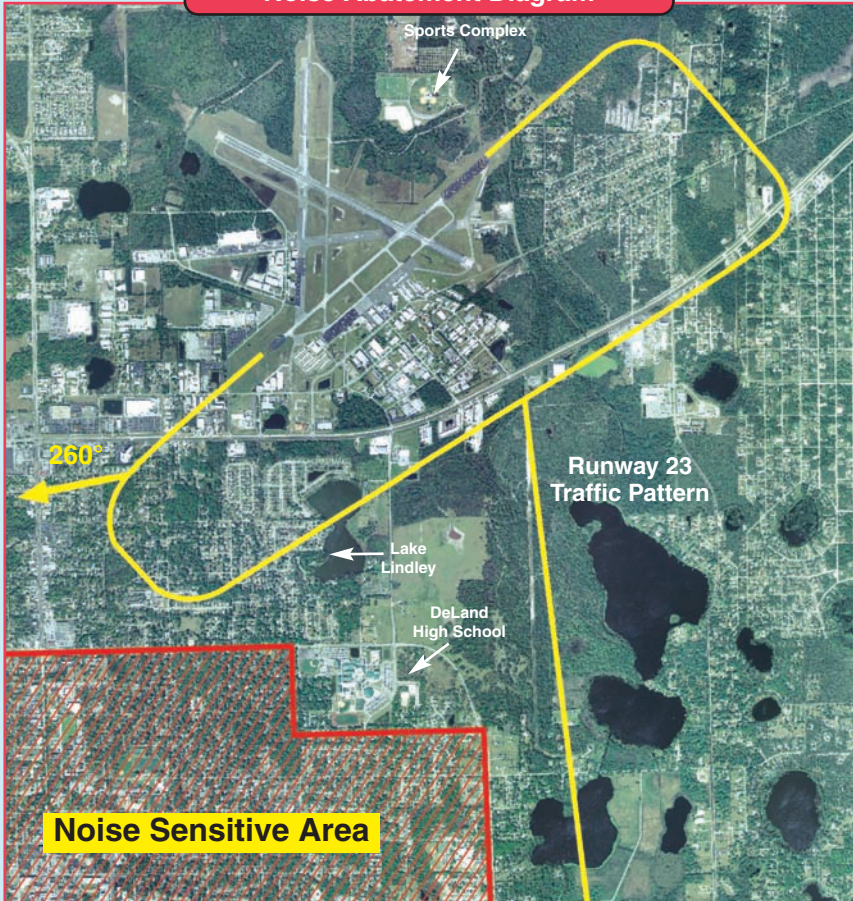
## Arrivals/Departures

- All runways left-hand traffic
- Reduce power on downwind - all runways
- Use NBAA recommended Noise Abatement Procedures
- Minimize reverse thrust

## Traffic Pattern

- 1080 TPA MSL
- RWY 5: Preferred during low wind conditions
- RWY 23: Crosswind turns should be made upon passing through 700' MSL.
- RWY 23: Make your downwind leg over the four lane highway
- RWY 23: Avoid flying south of Lake Lindley
- RWY 23: No Multi-Engine cuts until established on downwind
- RWY 23: Straight-out departures should fly runway heading until 700 MSL turn 260°
- Touch & Go's prohibited if there are 3 or more aircraft in the pattern
- Stop & Go's prohibited if there are 3 or more aircraft in the pattern
- Caution: Continuous parachute operations over the airport

## Noise Abatement Diagram



**AVOID NOISE SENSITIVE AREAS SOUTH OF THE AIRPORT**

# DeLand, Florida – DED

Sidney H. Taylor Field  
N 29°04.02' W 81°17.03'  
Field Elevation: 78' MSL  
Fuel: 100LL, Jet A

CTAF: 123.075  
AWOS: 119.575 (386) 740-5811  
DAB App/Dep Control: 125.35  
OMN VOR: 112.6 212° 16.8NM  
RWY 12-30: H (6001x100) ASPH D-60 HIRL  
RWY 12: REIL, PAPI (P2L) Trees.  
RWY 30: REIL, PAPI (P2L) Trees.  
RWY 5-23: H (4301x75) ASPH D-40 MIRL  
RWY 5: PAPI (P2L). Trees.  
RWY 23: PAPI (P2L). Trees.  
FBO-DeLand Jet Center: 123.025  
DeLand Jet Center (386) 734-9777

## APPROACHES

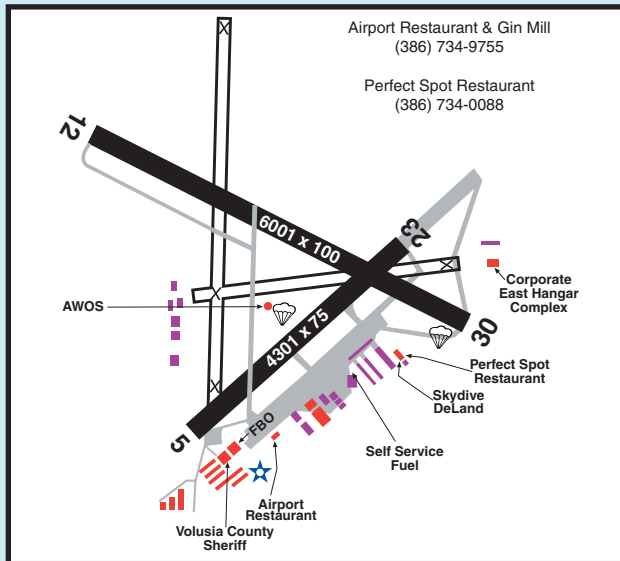
RWY 5 RNAV (GPS)  
RWY 23 RNAV (GPS), VOR  
RWY 12 RNAV (GPS)  
RWY 30 RNAV (GPS)

## TRAFFIC PATTERN ALT

1080 MSL - Lefthand

## REMARKS

- DeLand Jet Center 8:00-6:00, 7 Days a week
- Self Serve (credit card 24 hours) 100LL only
- Touch and go prohibited with 3 or more in pattern
- Stop and go activity prohibited with 3 or more in pattern
- Avoid overflying the airport during Skydive operations



**EMBRY-RIDDLE**  
Aeronautical University  
DAYTONA BEACH, FLORIDA

**FLIGHT DEPARTMENT**  
www.embryriddle.edu

## FUTURE ASSETS

Investing in Your Future

614 S. Amelia Ave.  
DeLand, FL 32724  
**(407) 432-6483**

Life Insurance, Annuities,  
Disability Insurance,  
Retirement Accounts, Etc.



1400 Flightline Blvd.  
Suite B  
DeLand, FL 32724

**386-238-7270**  
[www.flycda.com](http://www.flycda.com)



**U-FLY-IT Light Sport Aircraft LLC**  
Southeast Corner of the Airport  
740.407.4491 386.738.4444  
[www.uflyit.com](http://www.uflyit.com)

Fly-In Restaurant  
**The Perfect Spot  
Restaurant & Bar**  
386-734-0088  
Located on  
the DeLand Airport  
Next to  
**Skydive DeLand**

**DELAND**

**MUNICIPAL AIRPORT**

## DELAND MUNICIPAL AIRPORT

1777 Langley Ave. • DeLand, FL 32724 • (386) 740-6955  
Fax (386) 740-5810 • [www.delandairport.com](http://www.delandairport.com)

**\*WARNING: Not for inflight navigation, use latest data  
from charts, notams, fss, etc.**